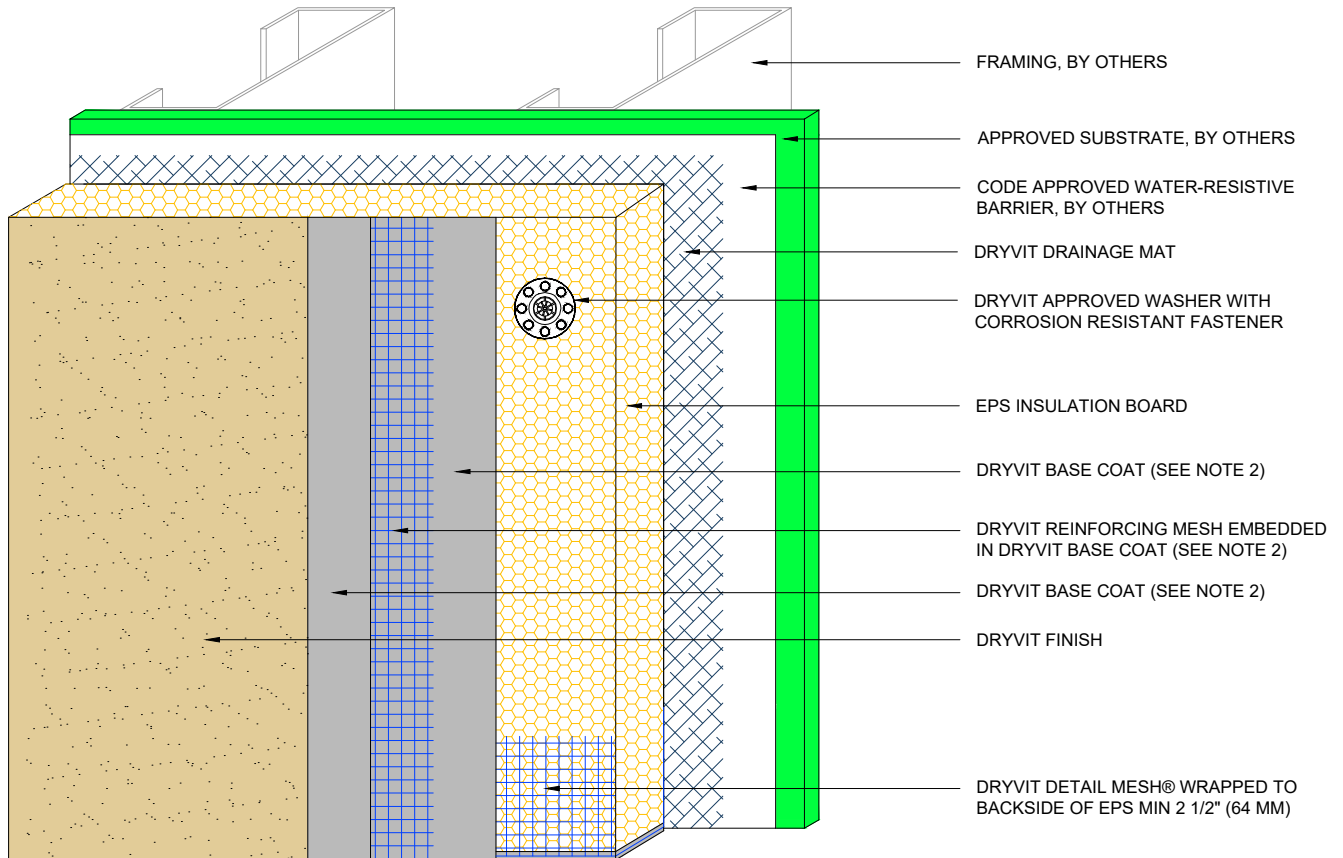
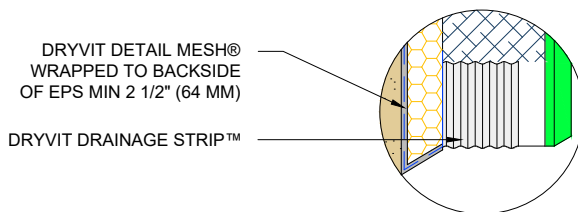


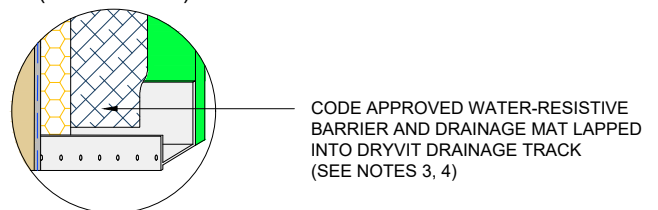
DRAINAGE MAT OPTION (SYSTEM 1)



DRYVIT DRAINAGE STRIP™ OPTION



DRYVIT DRAINAGE TRACK OPTION (SEE NOTE 3)



NOTE:

1. DRYVIT RECOMMENDS THAT GROUND FLOOR APPLICATIONS AND ALL FACADES EXPOSED TO ABNORMAL STRESS, HIGH TRAFFIC, OR DELIBERATE IMPACT HAVE THE BASE COAT REINFORCED WITH PANZER® MESH PRIOR TO STANDARD OR STANDARD PLUS MESH. LOCATION OF HIGH IMPACT ZONES SHOULD BE INDICATED ON CONTRACT DRAWINGS.
2. DRYVIT GENESIS® OR GENESIS® DM BASE COAT IS REQUIRED FOR MECHANICALLY FASTENED SYSTEMS 1-3.
3. IF PROJECT IS DEFINED AS NON-COMBUSTIBLE, DRAINAGE TRACK USAGE IS LIMITED TO THE BASE OF THE SYSTEM AT FINISHED GRADE LEVEL.
4. WHEN USING DRAINAGE TRACK, BACK OF EPS WILL NEED TO BE NOTCHED TO ACCOMMODATE THE DRYVIT DRAINAGE MAT AND WATER-RESISTIVE BARRIER.

The architecture, engineering, and design of the project using the Dryvit products are the responsibility of the project's design professional. All products and systems must comply with local building codes and standards. This detail is for general information and guidance only and Dryvit specifically disclaims any liability for the use of this detail. The project design professional determines, in its sole discretion, whether this detail or a functionally equivalent detail is best suited for the project. This detail is subject to change without notice. Contact Dryvit to ensure you have the most recent version.

Outsulation® LCMD Systems 1-5™



Dryvit Technical Support: 800-556-7752

Detail: System 1 Cutaway

Drawn by: HDE

Checked by: CS

Scale: NTS

Date: 5/12/2023

File Name:

O-LCMD 1



Construction Products Group

www.tremcocpg.com